

CORTE/CUT

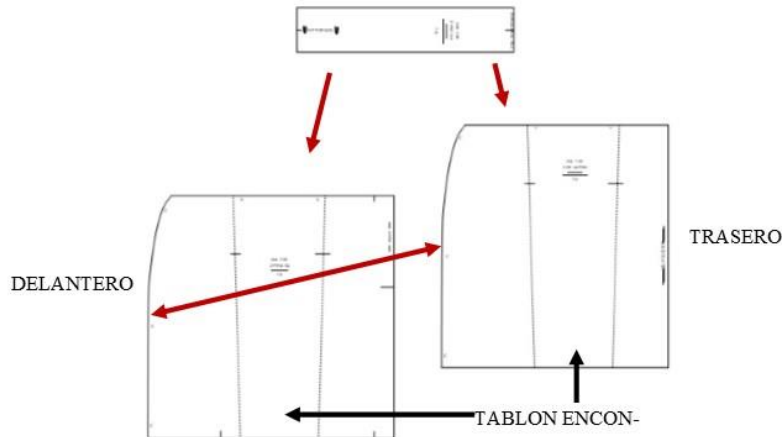
- 1.- Pieza delantera. 1 Corte con tela doblada
- 2.- Pieza trasera. 2 Cortes
- 3.- Pretina. 1 Corte con tela doblada

- 1.- Front piece. 1 Cut with folded fabric
- 2.- Rear piece. 2 cuts
- 3.- Waistband. 1 Cut with folded fabric

INSTRUCCIONES/INSTRUCTIONS

Genero: Casimir
1 Cierre del N°3

Genre: Casimir
1 Closure No. 3



CONFECCION/MAKING

- A.- Unir los puntos A-A y coser
- B.- Unir los puntos B-B y coser
 - Coser el cierre
 - C.- Coser los costados
 - Colocar la pretina

- A.- Join points A-A and sew
- B.- Join points B-B and sew
 - Sew the closure
 - C.- Sew the sides
 - Sew the waistband

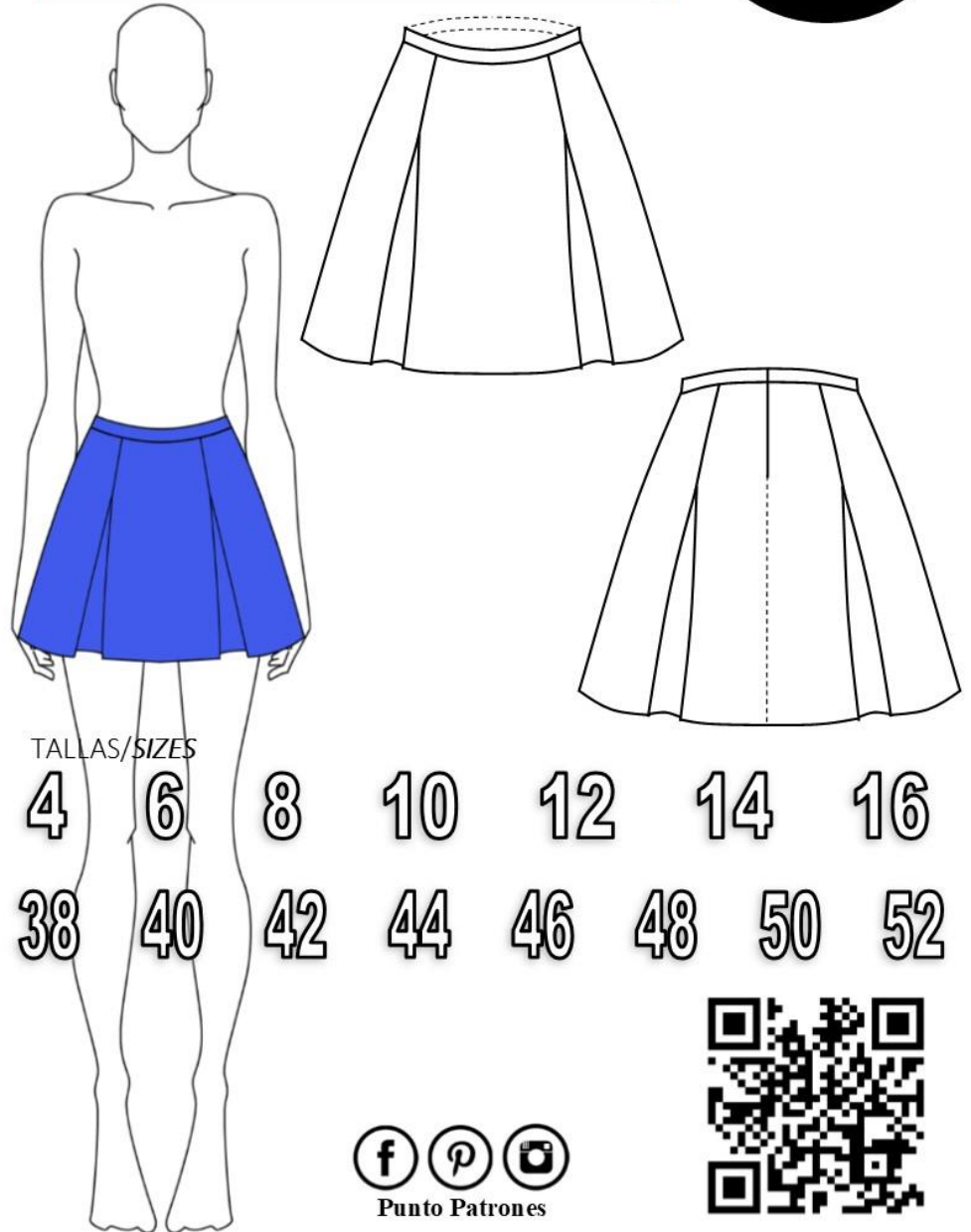
TELA Y CONSUMO/GENDER TOTAL

Para la T-38
Tela, 1,00 mts aprox.
Cortes, en tela de 1,50 mts de ancho

For the T-38
Fabric, 1.00 meters approx.
Cuts, in fabric of 1.50 meters wide

**CODIGO
268**

FALDA CON PINZAS ENCONTRADAS



TALLAS/SIZES

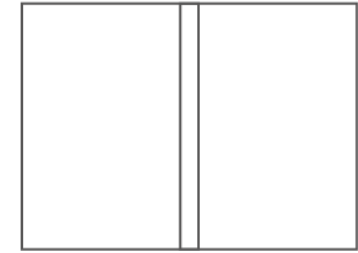
4	6	8	10	12	14	16
38	40	42	44	46	48	50 52



- PATRONES INCLUYEN 1 CENTIMETRO DE COSTURA PARA CORTAR Y ARMAR
- CONFIGURE SU IMPRESORA AL MISMO FORMATO DE HOJA QUE ELIGIO
- PATTERNS INCLUDE 1 CENTIMETER OF SEWING TO CUT AND ASSEMBLE
- CONFIGURE YOUR PRINTER TO THE SAME PAPER FORMAT YOU CHOOSE



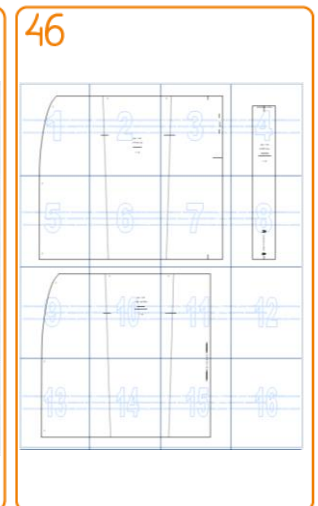
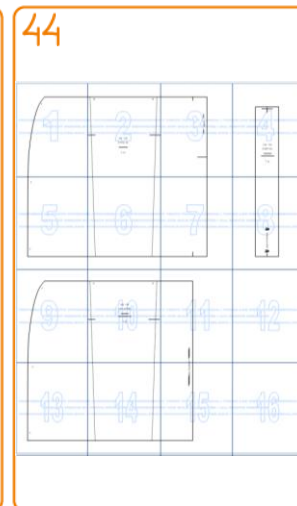
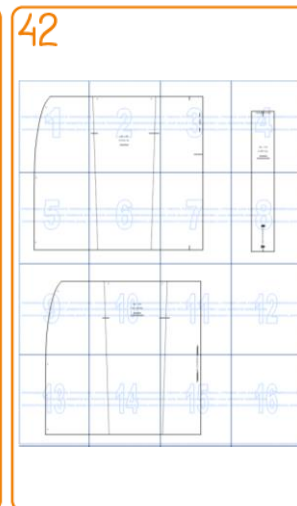
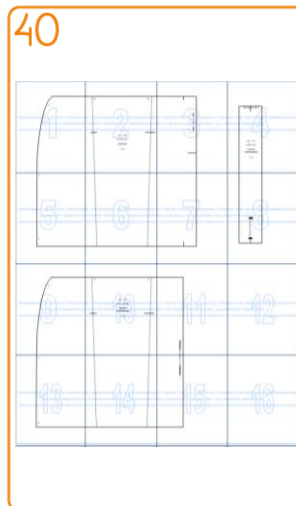
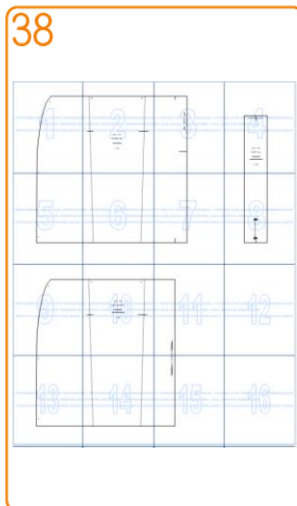
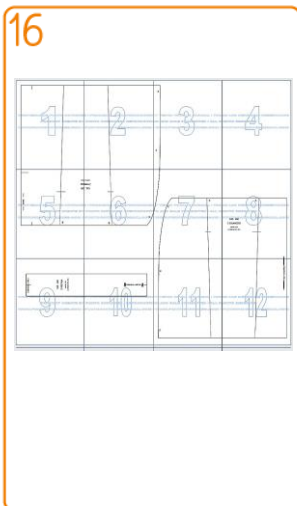
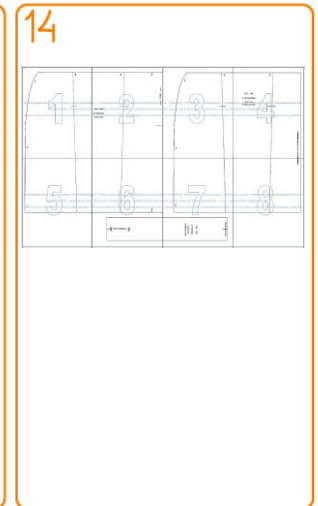
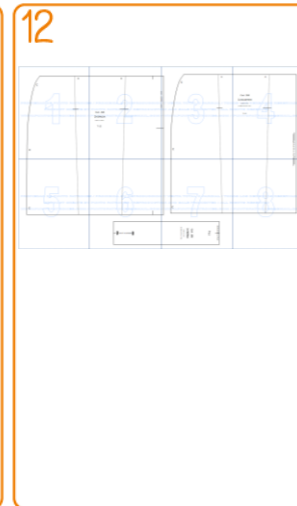
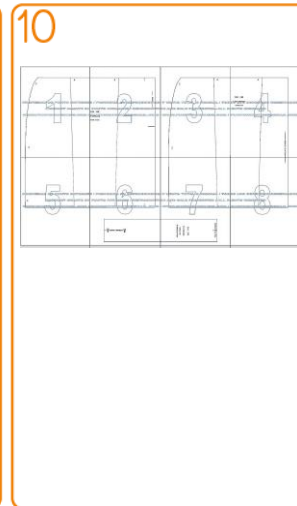
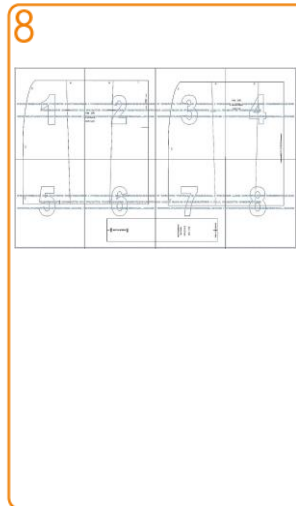
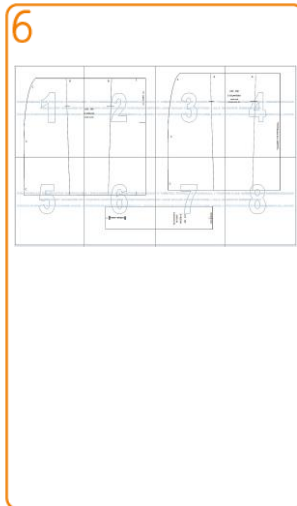
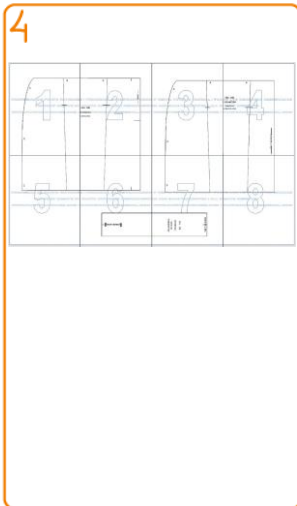
 **JUNTAR HOJAS**
PUT PAPER TOGETHER



 **NO MONTAR**
DO NOT MOUNT PAPER

ARMADO DE LAS HOJAS POR TALLAS

PAPER ASSEMBLY

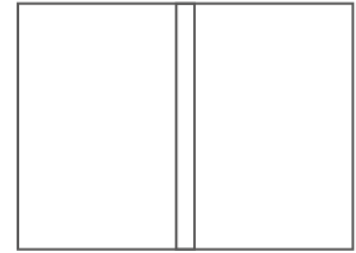




- PATRONES INCLUYEN 1 CENTIMETRO DE COSTURA PARA CORTAR Y ARMAR
- CONFIGURE SU IMPRESORA AL MISMO FORMATO DE HOJA QUE ELIGIO
- PATTERNS INCLUDE 1 CENTIMETER OF SEWING TO CUT AND ASSEMBLE
- CONFIGURE YOUR PRINTER TO THE SAME PAPER FORMAT YOU CHOOSE



 **JUNTAR HOJAS**
PUT PAPER TOGETHER

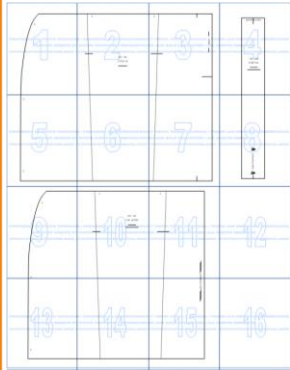


 **NO MONTAR**
DO NOT MOUNT PAPER

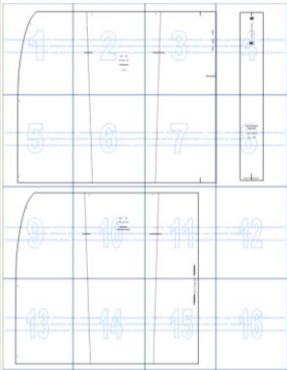
ARMADO DE LAS HOJAS POR TALLAS

PAPER ASSEMBLY

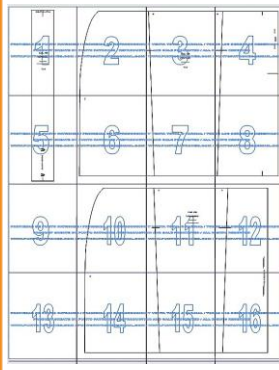
48



50



52



54

56

58